

A nighttime photograph of the Boston skyline. In the foreground, a cobblestone promenade runs along the water's edge, with a dark metal bollard and a chain. The water reflects the city lights. In the background, several skyscrapers are illuminated, including the Prudential Center. The sky is a deep blue.

# Crime and Police Activities

Boston, 2020

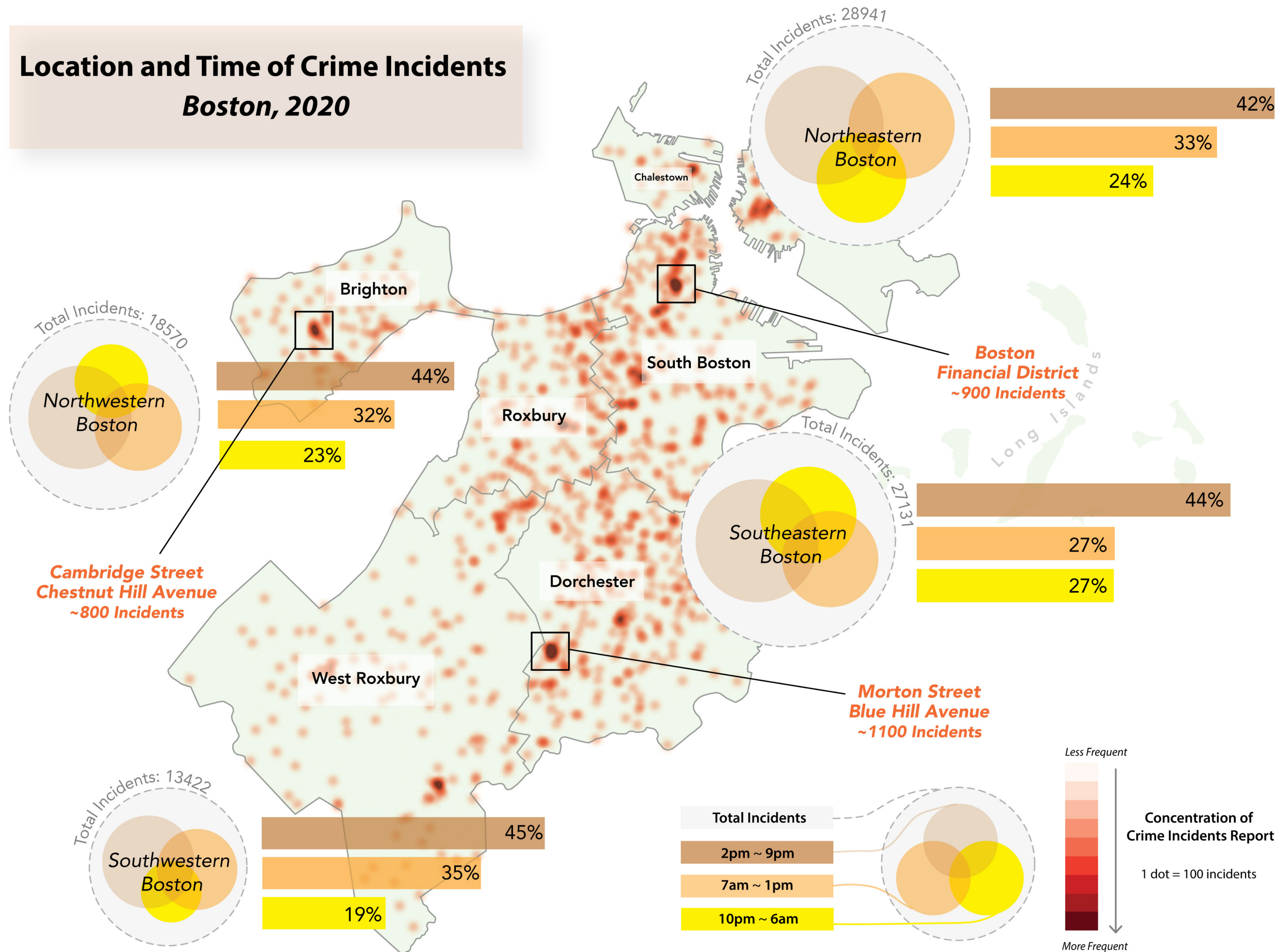




- When and where did incidents happen?
- Who and how many people were arrested?
- What is the service region and capacity of each police station?



# Location and Time of Crime Incidents Boston, 2020



## When and where did incidents happen?

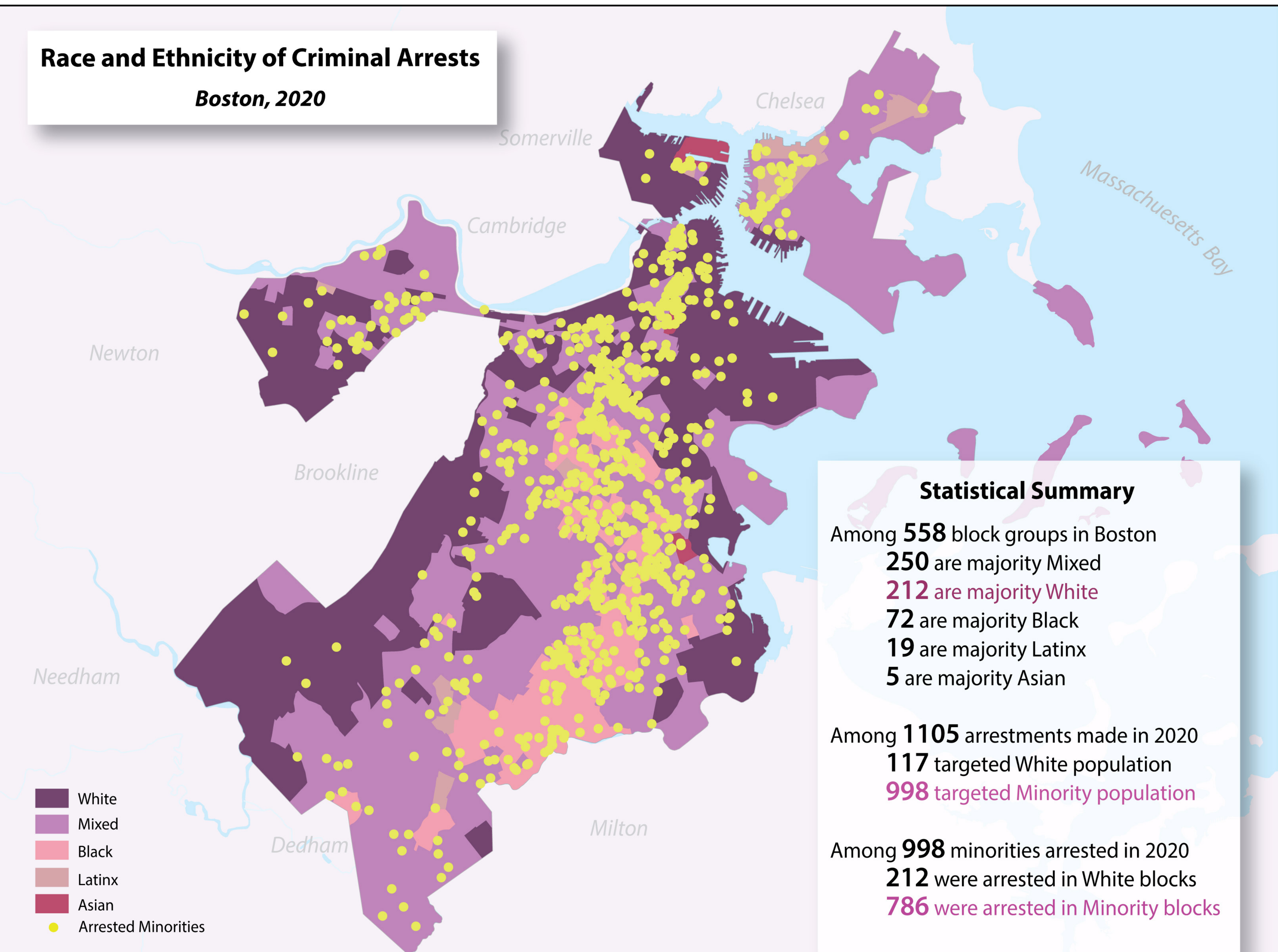
More concentrated in eastern and northern Boston, particularly at the Financial District, Morton Street & Blue Hill Avenue, Cambridge Street & Chestnut Hill Avenue.

More likely to occur between 2pm-9pm.

Late night crimes are more often found in southeastern Boston.



**Race and Ethnicity of Criminal Arrests**  
**Boston, 2020**



**Statistical Summary**

Among **558** block groups in Boston  
**250** are majority Mixed  
**212** are majority White  
**72** are majority Black  
**19** are majority Latinx  
**5** are majority Asian

Among **1105** arrestments made in 2020  
**117** targeted White population  
**998** targeted Minority population

Among **998** minorities arrested in 2020  
**212** were arrested in White blocks  
**786** were arrested in Minority blocks

Who and how many people were arrested?

Boston is majority white and mixed.

Minorities are heavily policed.

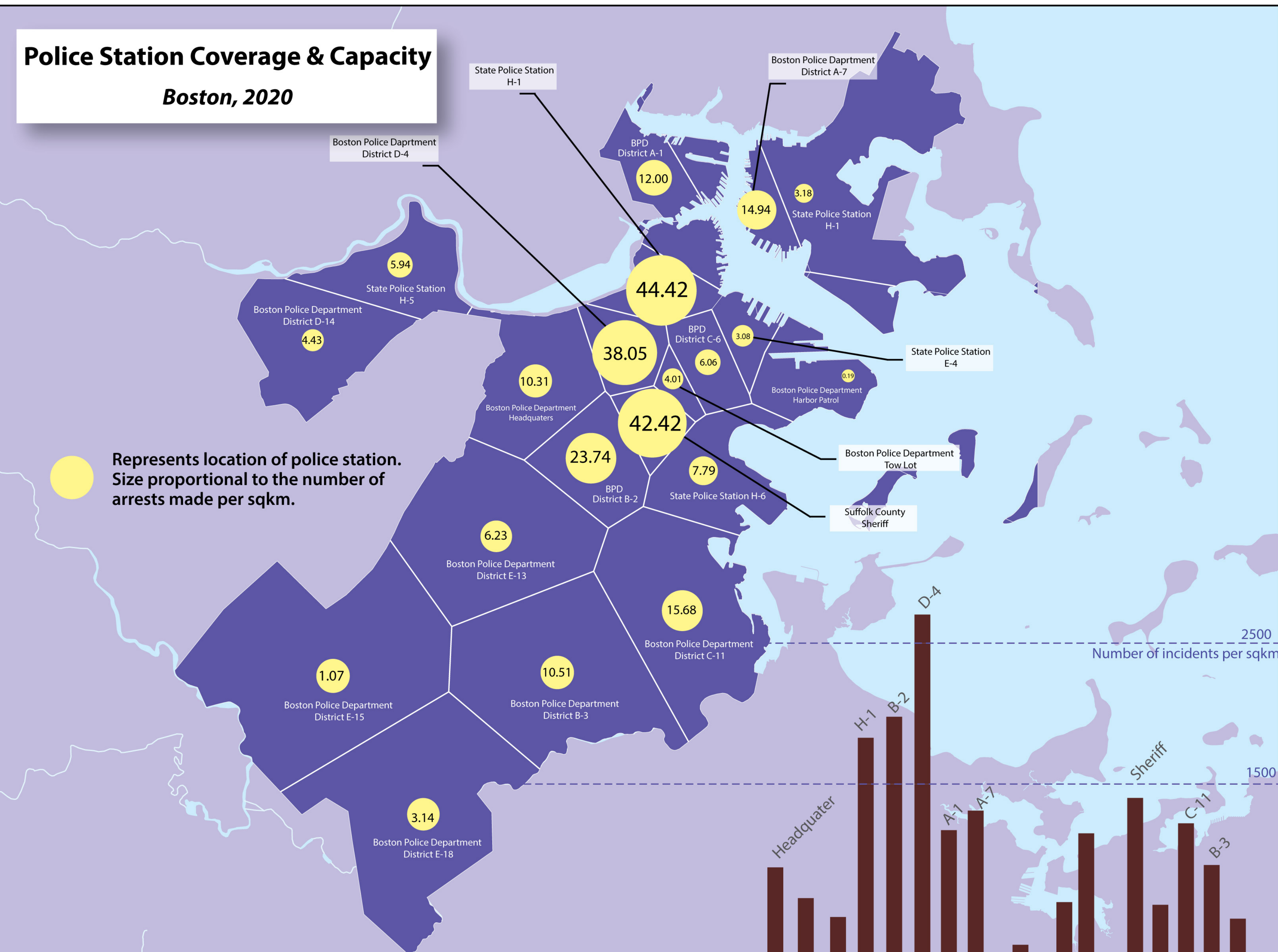
Need to improve the safety of minority neighborhoods.



# Police Station Coverage & Capacity

*Boston, 2020*

● Represents location of police station. Size proportional to the number of arrests made per sqkm.



Assume that each arrest was made by police officers from the nearest police station.

*What is the service region of each police station?*

*What is the number of arrest per square km for each service region?*

Police stations at northern Boston made significantly more arrests.

Need more police stations at the Financial District.

Improve the safety of minority neighborhoods by building more police stations at central Boston.

More policing between 2pm-9pm